

****Please read the DQA Measures User Guide prior to implementing this measure.****

DQA Measure Specifications: Administrative Claims-Based Measures

Follow-up after Emergency Department Visits for Non-Traumatic Dental Conditions in Adults

Description: The percentage of ambulatory care sensitive non-traumatic dental condition emergency department visits among adults aged 18 years and older in the reporting period for which the member visited a dentist within (a) 7 days and (b) 30 days of the ED visit

Numerators: Number of ambulatory care sensitive non-traumatic dental condition ED visits in the reporting period for which the member visited a dentist within (a) 7 days (NUM1) and (b) 30 days (NUM2) of the ED visit

Denominator: Number of ambulatory care sensitive non-traumatic dental condition ED visits in the reporting period

Rates: NUM1/DEN and NUM2/DEN

Rationale: The use of emergency departments (EDs) for non-traumatic dental conditions has been a growing public health concern across the United States (US)^{1,2,3,4,5,6,7,8} with over 2 million visits occurring in 2015.⁹ The majority of ED visits are semi-urgent (53.8%) or non-urgent (23.9%)¹⁰, which can be better managed in an ambulatory care setting. Dental care in an ED setting is not definitive with limited care continuity that ultimately leads to poor oral health outcomes.^{11,12,13} This process of care measure can be used to assess if the patient had timely follow-up with a dentist for more definitive care.

References:

1. Okunseri C, Okunseri E, Thorpe JM, Xiang Q, Szabo AJC, Cosmetic, Dentistry I. Patient characteristics and trends in nontraumatic dental condition visits to emergency departments in the United States. 2012;4:1.
2. Wall T, Nasseh K. Dental-related emergency department visits on the increase in the United States. Health Policy Resources Center Research Brief 2013; https://www.ada.org/en/~media/ADA/Science%20and%20Research/Files/HPRCBrief_05_13_1. Accessed February 15, 2019.
3. Wall T. Recent trends in dental emergency department visits in the United States:1997/1998 to 2007/2008. Journal of public health dentistry. 2012;72(3):216-220.
4. Lee HH, Lewis CW, Saltzman B, Starks H. Visiting the emergency department for dental problems: trends in utilization, 2001 to 2008. American journal of public health. 2012;102(11):e77-83.
5. Zhou W, Kim P, Shen JJ, Greenway J, Ditmyer M. Preventable Emergency Department Visits for Nontraumatic Dental Conditions: Trends and Disparities in Nevada, 2009–2015. 2018;108(3):369-371.
6. Seu K, Hall K, Moy E. Emergency department visits for dental-related conditions, 2009: Statistical Brief# 143. In: Healthcare Cost and Utilization Project (HCUP) Statistical Briefs [Internet]. Rockville (MD): Agency for Healthcare Research and Quality (US); 2012.
7. Rampa S, Wilson FA, Allareddy V. Trends in dental-related emergency department visits in the State of California from 2005 to 2011. Oral surgery, oral medicine, oral pathology and oral radiology. 2016;122(4):426-433.
8. Tomar SL, Carden DL, Dodd VJ, Catalanotto FA, Herndon JB. Trends in dental-related use of hospital emergency departments in Florida. J Public Health Dent. 2016 Jun;76(3):249-57.
9. Rui P, Kang K. National Hospital Ambulatory Medical Care Survey: 2015 Emergency Department Summary Tables. 2015; Available from: https://www.cdc.gov/nchs/data/nhamcs/web_tables/2015_ed_web_tables.pdf. Accessed May 17, 2021.
10. Wall T, Nasseh K, Vujicic M. Majority of dental-related emergency department visits lack urgency and can be diverted to dental offices. Health Policy Institute Research Brief 2014; <https://www.ada.org/en/science->

research/health-policy-institute/publications/research-briefs?utm_source=adaorg&utm_medium=hpifeaturedbox&utm_content=researchbriefs. Accessed May 17, 2021.

11. Hsia RY, Niedzwiecki M. Avoidable emergency department visits: a starting point. *International journal for quality in health care: journal of the International Society for Quality in Health Care*. 2017;29(5):642-645.
12. Allareddy V, Rampa S, Lee MK, Allareddy V, Nalliah RP. Hospital-based emergency department visits involving dental conditions: Profile and predictors of poor outcomes and resource utilization. *The Journal of the American Dental Association*. 2014;145(4):331- 337.
13. American Dental Association. Reduce health care costs and improve patient care by treating dental disease in the dental practice instead of the ER. 2013; http://www.ada.org/~media/ADA/Public%20Programs/Files/ER_Utilization_Issues_Flyer.a_shx. Accessed May 17, 2021.

National Quality Forum Domain: Process¹

Institute of Medicine Aims: Equity, Safety, Timeliness

National Quality Strategy Priority: Health and Wellbeing

Level of Aggregation: Program (NOTE: This measure requires claims data from medical encounters. Consequently, this measure applies to programs, such as Medicaid, that provide both medical and dental benefits. Use of this measure for stand-alone dental benefit plans may result in feasibility issues due to lack of access to necessary data. Use by health plans that provide both medical and dental benefits may be considered after assessment of data element feasibility within the plans' databases).

Improvement Noted As: A higher score indicates better quality.

Data Required: Administrative enrollment and claims data (medical and dental); single year. When using claims data to determine service receipt, include only paid claims.

Measure Purpose: Examples of questions that can be answered through this measure at each level of aggregation:

1. What is the percentage of ED visits for ambulatory care sensitive non-traumatic dental conditions for which adults see a dentist for follow-up within 7 days and 30 days, respectively?
2. Does the percentage ambulatory care sensitive non-traumatic dental condition ED visits that are followed up by visit with a dentist within 7 days and 30 days, respectively, stay stable, increase or decrease over time?

Applicable Stratification Variables

1. Age: 18, 19-20, 21-24, 25-34, 35-44, 45-54, 55-64, 65-74, 75-84, 85 and above

¹ **Process (measure type):** "A healthcare service provided to, or on behalf of, a patient. This may include, but is not limited to, measures that may address adherence to recommendations for clinical practice based on evidence or consensus." National Quality Forum. "NQF Glossary." Available at: http://www.qualityforum.org/Measuring_Performance/Measuring_Performance.aspx. Accessed August 29, 2022.

Follow-up after Emergency Department Visit for Ambulatory Care Sensitive Non-Traumatic Dental Conditions Calculation:

1. Identify all emergency department visits for ambulatory care sensitive non-traumatic dental conditions occurring during eligible member months **between January 1 and December 1** of the reporting year:

Note: Exclude all member months (and associated claims in those months) in which an individual was eligible for both Medicare and Medicaid (i.e., "dual eligible").

- a. Identify a health care encounter as an ED visit if ANY of the following are met:

- CPT codes 99281-99285 (ED visit for patient evaluation/management); **OR**
- Revenue code 0450-0459 (Emergency Room) or 0981 (professional fees for ER services); **OR**
- CMS place of service code for professional claims - 23 (Emergency Room)

- b. Exclude visits that result in inpatient admissions where inpatient admissions are identified as:

- (i) the patient has an inpatient admission defined by UB Type of Bill = 11x OR 12x OR 41x

AND

- (ii) that admission occurred within 48 hours:

[inpatient admit date] – [ED admit date] ≥ 0 days AND ≤ 2 days.

Note: If there are 2 or more dental ED visits that occurred within 2 days of the same inpatient admission, **only one** of those ED visits should be counted as resulting in an inpatient admission. [Example: If there is one dental-related ED visit on Saturday and a second dental-related ED visit on Sunday with an inpatient admission also occurring on Sunday, then this would be counted as 2 ED visits with one being excluded as "resulting in an inpatient admission" and one retained in the denominator as "did not result in an inpatient admission."]

- c. Member must be ≥ 18 years on date of visit

Reporting note: Age stratifications will be based on subject's age on date of ED visit.

- d. Identify an ED visit as being for an ambulatory care sensitive non-traumatic dental condition if:

- i. any of the ICD-10-CM diagnosis codes in Table 1 is listed as a FIRST-LISTED diagnosis code associated with the visit

OR

- ii. (a) any of ICD-10-CM diagnosis codes in Table 2 is listed as a FIRST-LISTED diagnosis **AND** (b) any of the ICD-10-CM diagnosis codes in Table 1 is listed as an ADDITIONAL LISTED diagnosis. (Codes from Table 2 must be accompanied by a code from Table 1 to qualify.)

- e. Count only one visit per member per day.
- f. Member must be enrolled on date of ED visit and through 30 days following the visit.
- g. Sum the number of ED visits for ambulatory care sensitive dental conditions.

YOU NOW HAVE THE DENOMINATOR (DEN): Number of ED visits for ambulatory care sensitive non-traumatic dental conditions

- 2. Check if subject had a visit with a dentist (dental service) within 30 days of the ED visit:

- a. If [CDT CODE] = D0100 – D9999 (any dental service), AND;

- b. [DATE OF ED VISIT]-[DATE OF DENTAL VISIT] <=30 days, AND;

Note: If two or more ambulatory care sensitive non-traumatic dental condition ED visits occur for the same member within 30 days of one another, then use the first ED visit as the index date for follow-up. Both ED visits will count in the denominator. A follow-up dental visit within 30 days of the first ED visit will be counted once in the numerator.

- c. If [RENDERING PROVIDER TAXONOMY] code = any of the NUCC maintained Provider Taxonomy Codes in Table 3 below,² then proceed to next step (#3).

- d. If a **AND** b **AND** c are not met, then the service was not a “follow-up dental service”; STOP processing.

Note: In this step, all **claims** with missing or invalid CDT CODE, missing or invalid NUCC maintained Provider Taxonomy Codes, or NUCC maintained Provider Taxonomy Codes that do not appear in Table 3 should be excluded.

YOU NOW HAVE NUMERATOR 2 (NUM2): ED visits for ambulatory care sensitive non-traumatic dental conditions for which the member had a visit with a dentist within 30 days

- 3. Among the ED visits identified in Step 2, check if the subject had a visit with a dentist (dental service) within 7 days of the ED visit:

[DATE OF ED VISIT]-[DATE OF DENTAL VISIT] <=7 days

YOU NOW HAVE NUMERATOR 1 (NUM1): ED visits for ambulatory care sensitive non-traumatic dental conditions for which the member had a visit with a dentist within 7 days

² **Identifying “dental” services:** Programs and plans that do not use standard NUCC maintained provider taxonomy codes should use a valid mapping to identify providers whose services would be categorized as “dental” services. Stand-alone dental plans that reimburse ONLY for services rendered by or under the supervision of the dentist can consider all claims as “dental” services.

4. Report
 - a. Unduplicated count of ambulatory care sensitive non-traumatic dental condition ED visits with 7-day dentist visit follow-up in numerator (NUM1)
 - b. Unduplicated count of ambulatory care sensitive non-traumatic dental condition ED visits with 30-day dentist visit follow-up in numerator (NUM2)
 - c. Unduplicated count of ambulatory care sensitive non-traumatic dental condition ED visits in denominator
 - d. Rates: (NUM1/DEN), (NUM2/DEN)

Table 1. Ambulatory Care Sensitive Non-Traumatic Dental Condition ICD-10-CM Diagnosis Codes

ICD-10-CM Code	Description of ICD-10-CM Code
A69.0	Necrotizing ulcerative stomatitis
A69.1	Other Vincent's infections
K00.0	Anodontia
K00.1	Supernumerary teeth
K00.2	Abnormalities of size and form of teeth
K00.3	Mottled teeth
K00.4	Disturbances of tooth formation
K00.5	Hereditary disturbances in tooth structure, not elsewhere classified
K00.6	Disturbances in tooth eruption
K00.8	Other specified disorders of tooth development
K00.9	Disorder of tooth development, unspecified
K01.0	Embedded teeth
K01.1	Impacted teeth
K02.3	Arrested dental caries
K02.51	Dental caries pit and fissure surface limited to enamel
K02.52	Dental caries on pit and fissure surface penetrating into dentin
K02.53	Dental caries on pit and fissure surface penetrating into pulp
K02.61	Dental caries on smooth surface limited to enamel
K02.62	Dental caries on smooth surface penetrating into dentine
K02.63	Dental caries on smooth surface penetrating into pulp
K02.7	Dental root caries
K02.9	Dental caries, unspecified
K03.0	Excessive attrition of teeth
K03.1	Abrasion of teeth
K03.2	Erosion of teeth
K03.3	Pathological resorption of teeth
K03.4	Hypercementosis

K03.5	Ankylosis of teeth
K03.6	Deposits (accretions) on teeth
K03.7	Intrinsic posteruptive color changes of hard tissues of teeth
K03.81	Cracked tooth
K03.89	Other specific diseases of hard tissues of teeth
K03.9	Disease of hard tissues of teeth, unspecified
K04.0	Pulpitis
K04.01	Reversible pulpitis
K04.02	Irreversible pulpitis
K04.1	Necrosis of the pulp
K04.2	Pulp degeneration
K04.3	Abnormal hard tissue formation in pulp
K04.4	Acute apical periodontitis of pulpal origin
K04.5	Chronic apical periodontitis
K04.6	Periapical abscess with sinus
K04.7	Periapical abscess without sinus
K04.8	Radicular cyst
K04.90	Unspecified diseases of pulp and periapical tissues
K04.99	Other diseases of pulp and periapical tissues
K05.00	Acute gingivitis, plaque induced
K05.01	Acute gingivitis, non-plaque induced
K05.10	Chronic gingivitis, plaque induced
K05.11	Chronic gingivitis, non-plaque induced
K05.20	Aggressive periodontitis, unspecified
K05.21	Aggressive periodontitis, localized
K05.22	Aggressive periodontitis, generalized
K05.30	Chronic periodontitis, unspecified
K05.31	Chronic periodontitis, localized
K05.32	Chronic periodontitis, generalized
K05.4	Periodontosis
K05.5	Other periodontal diseases
K05.6	Periodontal disease, unspecified
K052.11	Aggressive periodontitis, localized, slight
K052.12	Aggressive periodontitis, localized, moderate
K052.13	Aggressive periodontitis, localized, severe
K052.19	Aggressive periodontitis, localized, unspecified severity
K052.21	Aggressive periodontitis, generalized, slight
K052.22	Aggressive periodontitis, generalized, moderate
K052.23	Aggressive periodontitis, generalized, severe

K052.29	Aggressive periodontitis, generalized, unspecified severity
K053.11	Chronic periodontitis, localized, slight
K053.12	Chronic periodontitis, localized, moderate
K053.13	Chronic periodontitis, localized, severe
K053.19	Chronic periodontitis, localized, unspecified severity
K053.21	Chronic periodontitis, generalized, slight
K053.22	Chronic periodontitis, generalized, moderate
K053.23	Chronic periodontitis, generalized, severe
K053.29	Chronic periodontitis, generalized, unspecified severity
K06.0	Gingival recession
K06.013	Localized gingival recession, severe
K06.023	Generalized gingival recession, severe
K06.1	Gingival enlargement
K06.3	Horizontal alveolar bone loss
K06.8	Other specified disorders of gingiva and edentulous alveolar ridge
K06.9	Disorder of gingiva and edentulous alveolar ridge, unspecified
K060.10	Localized gingival recession, unspecified
K060.11	Localized gingival recession, minimal
K060.12	Localized gingival recession, moderate
K060.20	Generalized gingival recession, unspecified
K060.21	Generalized gingival recession, minimal
K060.22	Generalized gingival recession, moderate
K08.0	Exfoliation of teeth due to systemic causes
K08.101	Complete loss of teeth, unspecified cause, class I
K08.102	Complete loss of teeth, unspecified cause, class II
K08.103	Complete loss of teeth, unspecified cause, class III
K08.104	Complete loss of teeth, unspecified cause, class IV
K08.109	Complete loss of teeth, unspecified cause, unspecified class
K08.12	Complete loss of teeth due to periodontal diseases
K08.121	Complete loss of teeth due to periodontal disease, class I
K08.122	Complete loss of teeth due to periodontal disease, class II
K08.123	Complete loss of teeth due to periodontal disease, class III
K08.124	Complete loss of teeth due to periodontal disease, class IV
K08.129	Complete loss of teeth due to periodontal disease, unspecified class
K08.13	Complete loss of teeth due to caries
K08.131	Complete loss of teeth due to caries, class I
K08.132	Complete loss of teeth due to caries, class II
K08.133	Complete loss of teeth due to caries, class III
K08.134	Complete loss of teeth due to caries, class IV

K08.139	Complete loss of teeth due to caries, unspecified class
K08.191	Complete loss of teeth due to other specified cause, class I
K08.192	Complete loss of teeth due to other specified cause, class II
K08.193	Complete loss of teeth due to other specified cause, class III
K08.194	Complete loss of teeth due to other specified cause, class IV
K08.199	Complete loss of teeth due to other specified cause, unspecified class
K08.20	Unspecified atrophy of edentulous alveolar ridge
K08.21	Minimal atrophy of the mandible
K08.22	Moderate atrophy of the mandible
K08.23	Severe atrophy of the mandible
K08.24	Minimal atrophy of the maxilla
K08.25	Moderate atrophy of the maxilla
K08.26	Severe atrophy of the maxilla
K08.3	Retained dental root
K08.401	Partial loss of teeth, unspecified cause, class I
K08.402	Partial loss of teeth, unspecified cause, class II
K08.403	Partial loss of teeth, unspecified cause, class III
K08.404	Partial loss of teeth, unspecified cause, class IV
K08.409	Partial loss of teeth, unspecified cause, unspecified class
K08.421	Partial loss of teeth due to periodontal diseases, class I
K08.422	Partial loss of teeth due to periodontal diseases, class II
K08.423	Partial loss of teeth due to periodontal diseases, class III
K08.424	Partial loss of teeth due to periodontal diseases, class IV
K08.429	Partial loss of teeth due to periodontal diseases, unspecified class
K08.431	Partial loss of teeth due to caries, class I
K08.432	Partial loss of teeth due to caries, class II
K08.433	Partial loss of teeth due to caries, class III
K08.434	Partial loss of teeth due to caries, class IV
K08.439	Partial loss of teeth due to caries unspecified class
K08.491	Partial loss of teeth due to other specified cause, class I
K08.492	Partial loss of teeth due to other specified cause, class II
K08.493	Partial loss of teeth due to other specified cause, class III
K08.494	Partial loss of teeth due to other specified cause, class IV
K08.499	Partial loss of teeth due to other unspecified cause, unspecified class
K08.50	Unsatisfactory restoration of tooth, unspecified
K08.51	Open restoration margins of tooth
K08.52	Unrepairable overhanging of dental restorative materials
K08.530	Fractured dental restorative material without loss of material
K08.531	Fractured dental restorative material with loss of material

K08.539	Fracture dental restorative material, unspecified
K08.54	Contour of existing restoration of tooth biologically incompatible with oral health
K08.55	Allergy to existing dental restorative material
K08.56	Poor aesthetic of existing restoration of tooth
K08.59	Other unsatisfactory restoration of tooth
K08.8	Other specified disorders of teeth and supporting structures
K08.89	Other specified disorders of teeth and supporting structures
K08.9	Disorder of teeth and supporting structures, unspecified
K09.0	Developmental odontogenic cysts
K09.1	Developmental (nonodontogenic) cysts of oral region
K09.8	Other cysts of oral region, not elsewhere classified
K09.9	Cyst of oral region, unspecified
K11.0	Atrophy of salivary gland
K11.1	Hypertrophy of salivary gland
K11.20	Sialoadenitis, unspecified
K11.21	Acute sialoadenitis
K11.22	Acute recurrent sialoadenitis
K11.23	Chronic sialoadenitis
K11.3	Abscess of salivary gland
K11.4	Fistula of salivary gland
K11.5	Sialolithiasis
K11.6	Mucocele of salivary gland
K11.7	Disturbances of salivary secretion
K11.8	Other diseases of salivary glands
K11.9	Disease of the salivary glands, unspecified
K12.0	Recurrent oral aphthae
K12.1	Other forms of stomatitis
K12.2	Cellulitis and abscess of mouth
K12.30	Oral mucositis (ulcerative), unspecified
K12.31	Oral mucositis (ulcerative) due to antineoplastic therapy
K12.32	Oral mucositis (ulcerative) due to other drugs
K12.33	Oral mucositis (ulcerative) due to radiation
K12.39	Other oral mucositis (ulcerative)
K13.0	Diseases of lips
K13.1	Cheek and lip biting
K13.21	Leukoplakia of oral mucosa, including tongue
K13.22	Minimal keratinized residual ridge mucosa
K13.23	Excessive keratinized residual ridge mucosa
K13.24	Leukokeratosis nicotina palati

K13.29	Other disturbances of oral epithelium, including tongue
K13.3	Hairy leukoplakia
K13.4	Granuloma and granuloma-like lesions of oral mucosa
K13.5	Oral submucosal fibrosis
K13.6	Irritative hyperplasia of oral mucosa
K13.70	Unspecified lesions of oral mucosa
K13.79	Other lesions of oral mucosa
K14.0	Glossitis
K14.1	Geographic tongue
K14.2	Median rhomboid glossitis
K14.3	Hypertrophy of tongue papillae
K14.4	Atrophy of tongue papillae
K14.5	Plicated tongue
K14.6	Glossodynia
K14.8	Other diseases of the tongue
K14.9	Disease of tongue, unspecified
M26.00	Unspecified anomaly of jaw size
M26.01	Maxillary hyperplasia
M26.02	Maxillary hypoplasia
M26.03	Mandibular hyperplasia
M26.04	Mandibular hypoplasia
M26.05	Macrogenia
M26.06	Microgenia
M26.07	Excessive tuberosity of jaw
M26.09	Other specified anomalies of jaw size
M26.10	Unspecified anomaly of relationship of jaw-cranial base relationship
M26.11	Maxillary asymmetry
M26.12	Other jaw asymmetry
M26.19	Other specified anomalies of jaw-cranial base relationship
M26.20	Unspecified anomaly of dental arch relationship
M26.211	Malocclusion, Angle's class I
M26.212	Malocclusion, Angle's class II
M26.213	Malocclusion, Angle's class III
M26.219	Malocclusion, Angle's class unspecified
M26.220	Open anterior occlusal relationship
M26.221	Open posterior occlusal relationship
M26.23	Excessive horizontal overlap
M26.24	Reverse articulation
M26.25	Anomalies of interarch distance

M26.29	Other anomalies of dental arch relationship
M26.30	Unspecified anomaly of tooth position of fully erupted tooth or teeth
M26.31	Crowding of fully erupted teeth
M26.32	Excessive spacing of fully erupted teeth
M26.33	Horizontal displacement of fully erupted tooth or teeth
M26.34	Vertical displacement of fully erupted tooth or teeth
M26.35	Rotation of fully erupted tooth or teeth
M26.36	Insufficient interocclusal distance of fully erupted teeth (ridge)
M26.37	Excessive interocclusal distance of fully erupted teeth
M26.39	Other anomalies of tooth position of fully erupted tooth or teeth
M26.4	Malocclusion, unspecified
M26.50	Dentofacial functional abnormalities, unspecified
M26.51	Abnormal jaw closure
M26.52	Limited mandibular range of motion
M26.53	Deviation in opening and closing of the mandible
M26.54	Insufficient anterior guidance
M26.55	Centric occlusion maximum intercuspation discrepancy
M26.56	Non-working side interference
M26.57	Lack of posterior occlusal support
M26.59	Other dentofacial functional abnormalities
M26.60	Temporomandibular joint disorder, unspecified
M26.601	Right temporomandibular joint disorder, unspecified
M26.602	Left temporomandibular joint disorder, unspecified
M26.603	Bilateral temporomandibular joint disorder, unspecified
M26.609	Unspecified temporomandibular joint disorder, unspecified side
M26.61	Adhesions and ankylosis of temporomandibular joint
M26.611	Adhesions and ankylosis of right temporomandibular joint
M26.612	Adhesions and ankylosis of left temporomandibular joint
M26.613	Adhesions and ankylosis of bilateral temporomandibular joint
M26.619	Adhesions and ankylosis of temporomandibular joint, unspecified side
M26.62	Arthralgia of temporomandibular joint
M26.621	Arthralgia of right temporomandibular joint
M26.622	Arthralgia of left temporomandibular joint
M26.623	Arthralgia of bilateral temporomandibular joint
M26.629	Arthralgia of temporomandibular joint, unspecified side
M26.63	Articular disc disorder of temporomandibular joint
M26.631	Articular disc disorder of right temporomandibular joint
M26.632	Articular disc disorder of left temporomandibular joint
M26.633	Articular disc disorder of bilateral temporomandibular joint

M26.639	Articular disc disorder of temporomandibular joint, unspecified side
M26.641	Arthritis of right temporomandibular joint
M26.642	Arthritis of left temporomandibular joint
M26.643	Arthritis of bilateral temporomandibular joint
M26.649	Arthritis of unspecified temporomandibular joint
M26.651	Arthropathy of right temporomandibular joint
M26.652	Arthropathy of left temporomandibular joint
M26.653	Arthropathy of bilateral temporomandibular joint
M26.659	Arthropathy of unspecified temporomandibular joint
M26.69	Other specified disorders of temporomandibular joint
M26.70	Unspecified alveolar anomaly
M26.71	Alveolar maxillary hyperplasia
M26.72	Alveolar mandibular hyperplasia
M26.73	Alveolar maxillary hypoplasia
M26.74	Alveolar mandibular hypoplasia
M26.79	Other specified alveolar anomaly
M26.81	Anterior soft tissue impingement
M26.82	Posterior soft tissue impingement
M26.89	Other dentofacial anomalies
M26.9	Dentofacial anomaly, unspecified
M27.0	Developmental disorders of jaws
M27.1	Giant cell granuloma, central
M27.2	Inflammatory conditions of jaw
M27.3	Alveolitis of jaw
M27.40	Unspecified cyst of jaw
M27.49	Other cysts of jaws
M27.51	Perforation of root canal space due to endodontic treatment
M27.52	Endodontic overfill
M27.53	Endodontic underfill
M27.59	Other periradicular pathology associated with previous endodontic treatment
M27.61	Osseointegration failure of dental implant
M27.62	Post-osseointegration biological failure of dental implant
M27.63	Post-osseointegration mechanical failure of dental implant
M27.69	Other endosseous dental implant failure
M27.8	Other specified diseases of jaws
M27.9	Disease of the jaws, unspecified
M35.0C	Sjogren syndrome with dental involvement
M79.11	Myalgia of mastication muscle
R68.2	Dry mouth, unspecified

R68.84	Jaw pain
Z01.20	Encounter for dental examination and cleaning without abnormal findings
Z01.21	Encounter for dental examination and cleaning with abnormal findings
Z46.3	Encounter for fitting and adjustment of dental prosthetic device
Z46.4	Encounter for fitting and adjustment of orthodontic device

Table 2. Additional First-Listed ICD-10-CM Diagnosis Codes to Identify Ambulatory Care Sensitive Non-Traumatic Dental Condition Visits when Paired with an Additional Listed Diagnosis Code from the Ambulatory Care Sensitive Non-Traumatic Dental Condition ICD-10-CM Codes in Table 1

ICD-10-CM Code	Description of ICD-10-CM Code
L03.211	Cellulitis of face
L03.212	Acute lymphangitis of face
L03.213	Periorbital cellulitis
L03.221	Cellulitis of neck
L03.222	Acute lymphangitis of neck
R22.0	Localized swelling, mass and lump, head
R22.1	Localized swelling, mass and lump, neck

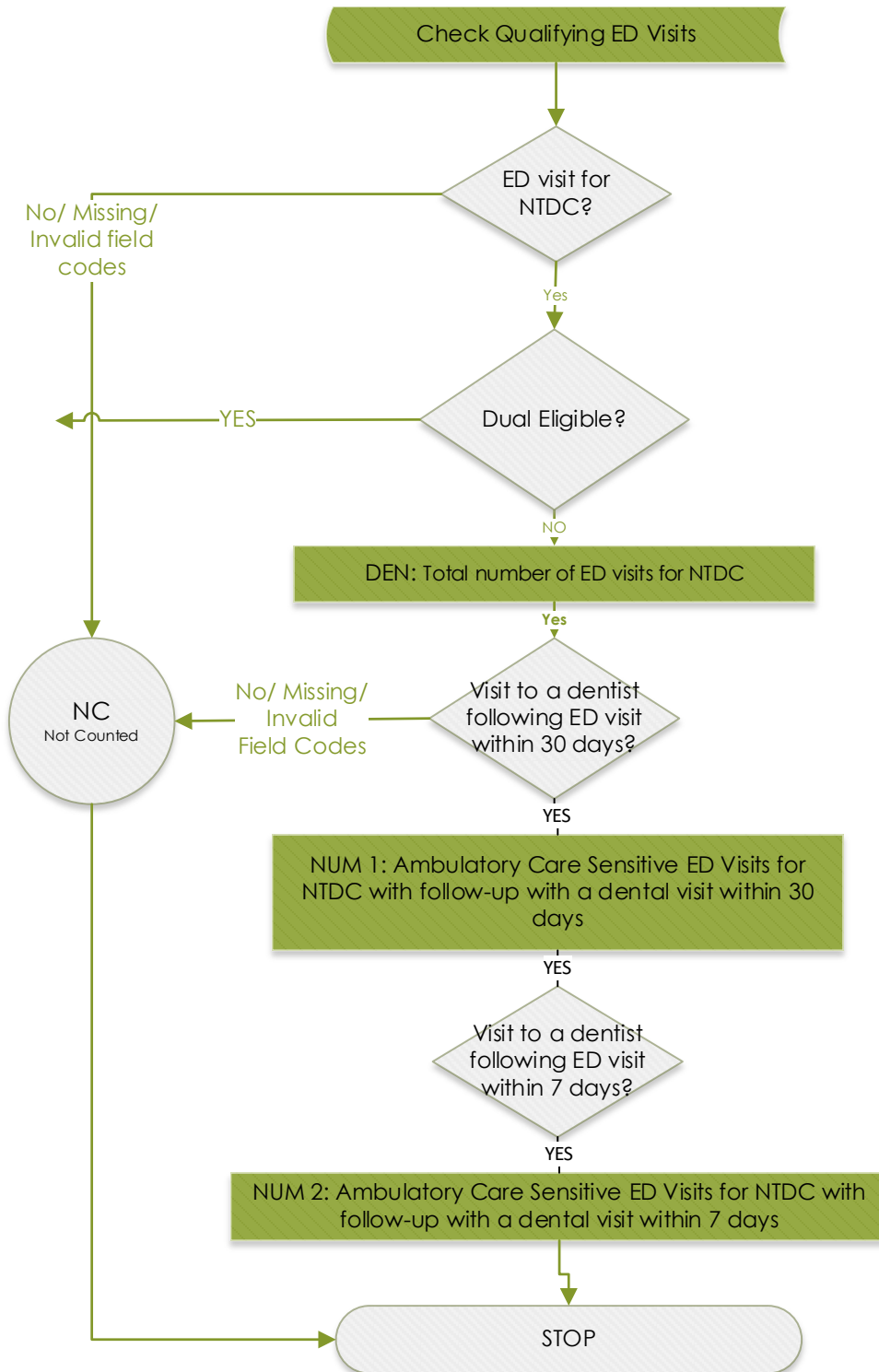
Table 3: NUCC maintained Provider Taxonomy Codes classified as "Dental Service"*

122300000X	1223P0106X	1223X0008X	125Q00000X	126800000X
1223D0001X	1223P0221X	1223X0400X	261QF0400X	261QD0000X
1223D0004X	1223P0300X	124Q00000X+	261QR1300X	204E00000X
1223E0200X	1223P0700X	125J00000X	1223X2210X	261QS0112X
1223G0001X	1223S0112X	125K00000X	122400000X	

*Services provided by County Health Department dental clinics may also be included as "dental" services.

+Only dental hygienists who provide services under the supervision of a dentist should be classified as "dental" services.

*** Note: Reliability of the measure score depends on quality of the data that are used to calculate the measure. The percentages of missing and invalid data for these data elements must be investigated prior to measurement. Data elements with high rates of missing or invalid data will adversely affect the accuracy and reliability of the measure score. ***



2023 American Dental Association on behalf of the Dental Quality Alliance (DQA) ©. All rights reserved. Use by individuals or other entities for purposes consistent with the DQA's mission and that is not for commercial or other direct revenue generating purposes is permitted without charge.

Dental Quality Alliance Measures (Measures) and related data specifications, developed by the Dental Quality Alliance (DQA), are intended to facilitate quality improvement activities.

These Measures are intended to assist stakeholders in enhancing quality of care. These performance Measures are not clinical guidelines and do not establish a standard of care. The DQA has not tested its Measures for all potential applications.

Measures are subject to review and may be revised or rescinded at any time by the DQA. The Measures may not be altered without the prior written approval of the DQA. The DQA shall be acknowledged as the measure steward in any and all references to the measure. Measures developed by the DQA, while copyrighted, can be reproduced and distributed, without modification, for noncommercial purposes. Commercial use is defined as the sale, license, or distribution of the Measures for commercial gain, or incorporation of the Measures into a product or service that is sold, licensed or distributed for commercial gain. Commercial uses of the Measures require a license agreement between the user and DQA. Neither the DQA nor its members shall be responsible for any use of these Measures.

THE MEASURES ARE PROVIDED "AS IS" WITHOUT WARRANTY OF ANY KIND

Limited proprietary coding is contained in the Measure specifications for convenience.

For Proprietary Codes:

The code on Dental Procedures and Nomenclature is published in Current Dental Terminology (CDT), Copyright © 2022 American Dental Association (ADA). All rights reserved.

This material contains National Uniform Claim Committee (NUCC) Health Care Provider Taxonomy codes (http://www.nucc.org/index.php?option=com_content&view=article&id=14&Itemid=125). Copyright © 2022 American Medical Association. All rights reserved

Users of the proprietary code sets should obtain all necessary licenses from the owners of these code sets. The DQA, American Dental Association (ADA), and its members disclaim all liability for use or accuracy of any terminologies or other coding contained in the specifications.

THE SPECIFICATIONS ARE PROVIDED "AS IS" WITHOUT WARRANTY OF ANY KIND.